

# H.F. Lenz Company 2023 Highlights



Looking back on 2023, we are awestruck by what our talented group of employees has been able to accomplish! It was year filled with exciting new projects and clients, substantial company growth and personal and professional accomplishments. We welcomed new employees, celebrated over 20 milestone anniversaries, came to together to support each other and our local communities and expanded our market sectors. We were honored to be involved in the design of several of the most innovative, cutting-edge facilities in the country, in collaboration with some of the most talented architects in the world. Our success would not be possible without our dedicated employees, our industry partners and our long-term client relationships, and we extended our deepest gratitude to each of them.

We are proud to share a few of our 2023 highlights:

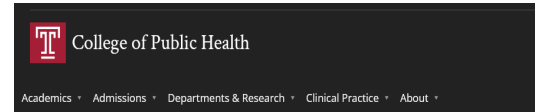
Our core markets experienced solid growth with most sectors gaining new clients in geographically diverse areas of the country. We were awarded over 500 projects in 43 states and have continued to move up in national industry rankings. Our current rankings include:

- Building Design and Construction (BD+C) 2023 Giants, Top 75 Engineering Firms - We are ranked #48 (up four spots from 2022!)
- Engineering News Record (ENR) MidAtlantic Top Design Firms - We are ranked #54 (up five spots from 2022!)
- Consulting Specifying Engineer (CSE) 2023 MEP Giants - We are ranked #65 (up seven spots from 2022!)

We also ranked in the Top 100 Engineering and Engineering/Architecture Firms in several of our primary sectors, including data centers, federal, state and local government projects, justice facilities, healthcare facilities, hospitality sector, industrial facilities, laboratories, office sector, retail facilities, science and technology facilities, K-12 schools, colleges and universities, cultural facilities and airport terminals. We were ranked in the top 50 in the majority of these sectors. The rankings are based on yearly revenues in each sector.

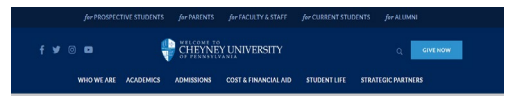
Notable projects in the **Higher Education Sector** include:

- Duquesne University's New College of Medicine, the largest project in Duquesne's history. The new state-of-the-art facility includes a simulated hospital featuring an operating room, emergency room, OB unit, and critical care ward, serving as a premier training ground for future health professionals. Notably, is its distinction as one of the few schools in the country to offer a cutting-edge HoloAnatomy lab, providing students with 3D perspectives to enhance their anatomy learning experience. Construction was completed and the ribbon cutting was held in January 2024.
- Temple University's Paley Hall, which includes the adaptive re-use and renovation of the 188,000 SF existing building, along with a new 139,500 SF addition, which will house the University's College of Public Health. The building is designed to both LEED and WELL Building/Fitwel Standards. The \$120 million project is currently in construction.
- The University of Pennsylvania's New Bolton Center (NBC), a new \$60 million, 55,000 SF animal diagnostic, forensic and research facility, which will provide support services to the Pennsylvania Department of Agriculture through the Pennsylvania Animal Diagnostic Laboratory System (PADLS) and the Pennsylvania Equine Toxicology and Research Laboratory (PETRL). Spaces include a Microbiology Lab; Large Animal Pathology Lab; Poultry Pathology Lab; Toxicology Lab; a Field Investigation Office; lab space convertible to Biological Safety Level 3 Facilities; PCR/Molecular Diagnostics; 20 mass spectrometers; and a bioprocessor. The design incorporated the principles of the Labs21 program. Design is currently underway.
- University of Pittsburgh's renovation of the 85,000 SF Crawford Hall, which is utilized by the Neuroscience Research Department and housing a variety of specialized laboratories for research ranging from the reproduction of the African clawed frog, to understanding how misfolded proteins are recognized and destroyed in cells in their mission to fight diseases. Design is complete and the project is currently out to bid.
- The University of Pennsylvania's \$80 million renovation of the historic College Hall. The building was the first building on the west Philadelphia campus, built in the late 1800's and is listed on the National Registry of Historic Places. Construction is in progress.
- Bucknell University's new West Campus Apartments designed to provide accommodations for 164 sophomores, juniors and seniors in apartment-style suites. The development consists of four modular construction facilities, which comprise over 860,000 SF in total. The facilities include geothermal heating and cooling and motion-controlled temperature control. Two of the four facilities are occupied and the other two are in construction and



**GROUNDBREAKING CEREMONY OFFERS FIRST LOOK AT THE NEW PALEY HALL**

Philadelphia Mayor Jim Kenney joined Temple University leaders, supporters and strategic planners in welcoming a new era for Temple's College of Public Health on April 3 at the groundbreaking ceremony for Paley Hall. The event also marked the launch of **Public Health to Change the World**, the campaign for the College of Public Health.



**Overview**

As a part of the State System's capital project process, Cheyney University received a capital appropriation of \$48 million to replace its outdated gymnasium, Cope Hall, which was built over 40 years ago. The original capital request produced the current Administration. The current Administration has worked diligently with the Commonwealth of Pennsylvania's Department of General Services to reappropriate the capital funds to create a multi-use sports complex on Cheyney's campus. With student focus on design elements and the involvement of other members of the Cheyney community, the new sports complex is poised to provide Cheyney students with more options in terms of athletic, recreational, and intramural activities, as well as additional career and experiential opportunities that Cope Hall currently provides.

The revised capital project, already underway, will consist of two newly-built indoor facilities—one will feature ten basketball courts and a competitive show hardwood court and the other will house a full-size artificial turf playing field—along with new locker, gym, and concessions facilities. The sprawling complex will also include a new outdoor grass football field surrounded by an eight-lane track. This will enable Cheyney to host track tournaments, which it is currently unable to do with its current dilapidated field and six-track lane. There will also potentially be two or three other outdoor artificial turf fields (pending on funding), as well as newly updated outdoor tennis and basketball courts.

This will be a multi-sports facility where Cheyney students will learn facilities management.

expected to be open in the Fall of 2024. A fifth building is starting design and will be ready for Fall 2025.

- Cheyney University's \$48 million project to create a new multi-use sports complex consisting of two newly-built indoor facilities—one will feature ten basketball courts and a competitive show hardwood court and the other will house a full-size artificial turf playing field—along with new locker, gym, and concessions facilities and a new outdoor grass football field surrounded by an eight-lane track. The design is completed and will go out for bid soon.

Infrastructure projects include a new boiler plant at PennWest California University and a chiller plant expansion at Indiana University of Pennsylvania (IUP).

In the **Government Sector**, we continue to provide engineering services under our nationwide term contract for NASA and recently completed a new respirator testing facility for CDC/NIOSH, which included essentially designing a building inside of the building, consisting of an independent three-story structure.

We are currently working on central utility plant upgrades for the Pennsylvania State Capitol Complex. The project includes electrical switchgear and distribution replacement/upgrades; replacement of three 1,200-ton chillers; construction of a new underground electrical vault and tunnel; replacement of aged chilled water and condenser water piping; and other enhancements. We began our work at the Capitol Complex in the late 1960's. In 1981, we were involved in the design of a \$124 million addition and renovation project, which included a new 235,000 SF congressional office building, an 800-car underground parking garage, renovations to 400,000 SF of office space in the North and South Office Buildings, renovation of the 7,500-ton central refrigeration plant, and a new 251,000 SF plaza. We are proud to have continued our work at the complex with several projects in recent years in addition to the current central plant upgrades.

We were also retained for the HVAC renovations to the 420,125 SF Rachel Carson government office building in Harrisburg, PA. H.F. Lenz Company provided engineering services for the original design of the new building in the late 1980's, so our team is excited for the opportunity to be working at the facility again 40 years later. In fact, eight of our key personnel for the original design are still working for our firm and are involved in the current project!

A few additional projects include:

- Lower Bucks Government Services Center - a ground breaking was held for the new two-story, 39,000 SF multi-agency county government office building (Bristol Township, Pennsylvania)
- City of Reading (Pennsylvania) - Reading City Hall HVAC upgrades, currently in progress
- Cambria County Human Services Building (Ebensburg, Pennsylvania) - Renovations to the Domestic Relations/Day Reporting/Probation Center
- Infrastructure upgrades at four State Correctional Institutions in Pennsylvania, currently in progress



**Bucks County Breaks Ground on Updated Lower Bucks Government Services Center**

The Bucks County Commissioners broke ground today at the future site of the updated Lower Bucks Government Services Center, announcing the impending start of construction on a project that will greatly improve public access to county government.



When complete, the two-story, 39,000 square foot facility in Bristol Township will house accessible offices for 13 County departments, including some row offices and court offices.

"For far too long, essential government offices and services have been difficult, if not impossible to access for too many residents of Bucks County," said Chief Operating Officer Margie McKewitt. "This administration considers it our obligation to ensure county government serves everyone who lives and works here, and we're proud to be taking this tremendous step today toward meeting that goal."



Our **Healthcare Team** has continued to grow and expand their services throughout the U.S. Several of their projects were featured in articles over the past year including:

- MetroHealth's New Good Manufacturing Practice (GMP) facility, making MetroHealth the second public hospital and first safety net hospital in the U.S. to offer in-house viral vector production.
- Penn Highlands Mon Valley Hospital's Substance Recovery Unit, the first and only Level 3.4-4.0 inpatient withdrawal and treatment facility in the tri-county region.
- AHN West Penn Hospital's new Melanoma Lab, a state-of-the-art Skin Cancer Center at West Penn Hospital, featuring a first-in-the-region full-body 3D imaging system that provides custom digital surveillance for skin abnormalities.

The team is currently working on a new free-standing Behavioral Health Hospital for Indiana Regional Medical Center, CMG New Season Treatment Clinics in multiple states, as well as kicking off services for IVF clinics throughout the U.S., with the designs for the first three clinics currently in progress.

Infrastructure projects include AHN West Penn Hospital's \$60 million, phased radiology upgrades and an emergency chiller project for Penn State Health Children's Hospital. The chiller project was necessary due to a leak that flooded five stories of the building. The design was completed under a tight deadline and the project is currently under construction.

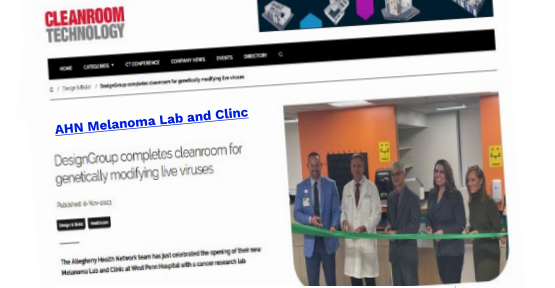
In the **Hotel/Hospitality** sector, projects have been begun to pick up after a brief lull over COVID 19. The team worked on Property Improvement Projects (PIPs) at 16 locations for Hyatt Hotels and nine PIP projects for Sonesta Simply Suites.

Some additional projects include:

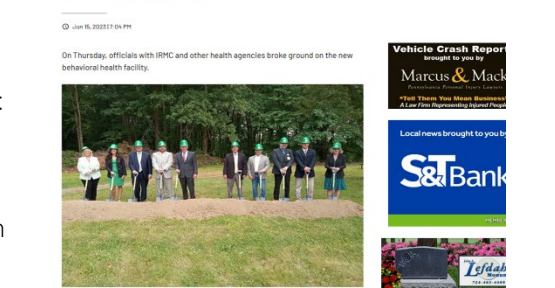
- New hotel/condo development for Toftrees Golf Resort in State College, Pennsylvania
- New 262-room Embassy Suites in Madison, Wisconsin
- New Best Western in Aurora, Illinois
- Four Hyatt House to Candlewood Suites conversions
- Adaptive re-use of Hotel Indigo in West Chester, Pennsylvania
- Original development and ongoing updates to the Virgin Hotels brand standards for MEP systems

The team is working on several other new construction, renovation and ongoing projects throughout the U.S.

The MetroHealth System Announces Completion of Vector and Cellular Facility, Improving Access to Critical Therapies for People with Cancer  
Cleveland, OH | WTNH 30, 2023



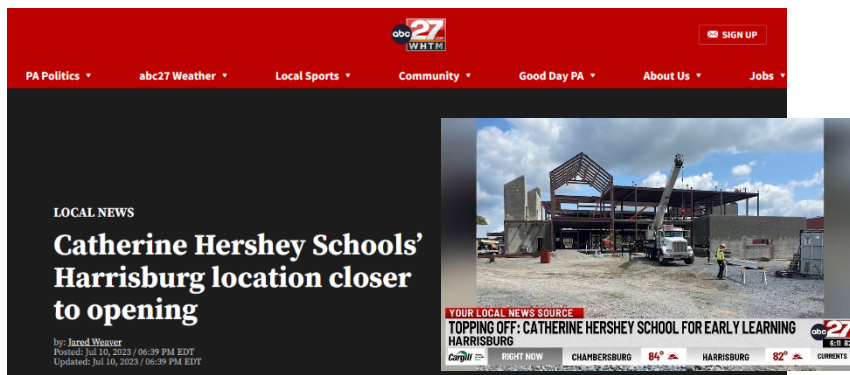
IRMC BREAKS GROUND ON NEW BEHAVIORAL HEALTH FACILITY



In the **K-12 sector**, we moved up 10 spots in our national ranking! The team has been involved in several ESSER projects over the past few years, as well as studies, renovations, building system upgrades, additions and athletic facilities. Our Connecticut and Ohio offices have also expanded their K-12 portfolios with multiple new clients and projects. A few of our projects include:

- Rutgers Preparatory School (Somerset, New Jersey) - Campus Master Plan and design of a new 22,300 SF building addition, adjacent to the dining commons and music buildings. The new building will serve as the "front door" to the campus housing the admissions department, as well as multi-purpose assembly and meeting space, modern, collaborative makerspaces and specialized classrooms for Robotics, STEAM, Architecture and Design and school's Bloomberg Lab
- Wilmington Friends School (Wilmington, Delaware) Lower School Renovation - Renovation of the elementary school that houses spaces for pre-k through grade 5. Specialized areas include STEM classrooms, makerspace, ceramics and art spaces, computer lab, music room, worship/meeting space, kitchen/cafeteria, gymnasium and library
- Erie County Technical School (Erie, Pennsylvania) - Engineering services for the \$34 million renovation and infrastructure upgrades for the existing facility, which was built in 1968. WE recently completed the engineering services for a new 21,000 SF addition, which included an expansion for the culinary arts lab, a new area dedicated to early childhood education and upgrades to the precision machine lab.
- Millcreek Township School District (Erie, Pennsylvania) - Construction began on the McDowell Senior High School renovations (345,521 SF) and Tracy Elementary School renovations. We previously worked on the renovations for Grandview Elementary, Ridgefield Elementary, Chestnut Hill Elementary, Westlake Middle School, Belle Valley Elementary, Walnut Creek Middle School and the Education Center for the district.

In addition to our public and private school projects, we are also working on four projects for the Catherine Hershey School's New Early Learning Centers (Harrisburg, Middletown, Lancaster and Elizabethtown, Pennsylvania).



SHARE    

HARRISBURG, Pa. (WHTM)- The Catherine Hershey Schools for Early Learning (CHS) is much closer to opening its Harrisburg location.

The placing of the final beam, or the "topping off," of CHS's Harrisburg took place on Monday at the 47,000-square-foot building located at the corner of North 6th and Muench Streets.

[| Hershey Gardens announce new rose named after Catherine Hershey >](#)



Our **Commissioning Team** has been busy working on the Terminal Modernization at Pittsburgh International Airport. At \$1.4 billion, the project is listed as the largest construction project in the Pittsburgh region. The team is also providing commissioning services for several healthcare facility, corporate and higher education projects.

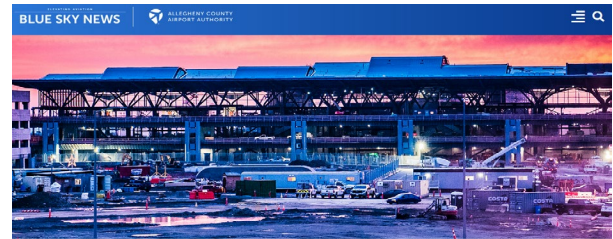
Our **Civil Team** was recognized with the Engineers' Society of Western Pennsylvania's 2023 Commercial Project of the Year Award for their work on Westmoreland County Industrial Development Corporation's Commerce Crossing project. The development included a new 230± acre, rail served, Business Park comprising 5 individual building lots that can support approximately 2 million SF of warehouse space. Additional projects included Susquehanna Union Green, a 60-acre mixed-use development with restaurants, retail shops, single-family homes, apartments, hotel, a senior living community, and a 17-acre green space in Dauphin County, and design for a 1 million SF distribution center for a confidential client in Pennsylvania. They have also experienced a surge in park and recreation projects with nearly a dozen new Park projects in 2023. These Parks included amenities such as athletic fields and courts, swimming pools, splash pads, pavilions, concession stands, dog parks, playgrounds, walking trails, bike trails, bicycle pump tracks, nature parks, rock climbing walls and bouldering courses.

This team has also continued to work on trucking transfer facilities for Saia LTL Freight at locations throughout the U.S. In 2023, they were awarded projects in 24 states.

### Corporate/Data Center Team

While many of this team's projects are confidential, the team has been busy working on high-priority projects for financial institutions, large-scale data center clients and government clients throughout the U.S. These projects range from new data centers, corporate expansions and fit-outs, complex infrastructure projects to specialized Computational Fluid Dynamics (CFD) modeling and ENERGY STAR validation services for multi-tenant high rises.

Also in the corporate realm, we were proud to see that our project for the new Great Lakes Cheese Headquarters in Hiram, Ohio, received a Merit Award from AIA Cleveland in 2023! The new facility houses approximately 160 employees and can accommodate up to 240. The 54,754 SF new facility also includes a Customer Experience Center of approximately 5,000 SF including a full commercial kitchen, training room, innovation center with design lab, open collaboration spaces, a café, lounges and a beautiful two-story atrium.



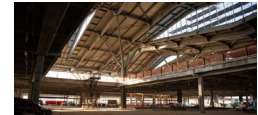
### New PIT Terminal Makes Great Progress in 2023

Building takes shape as adjacent roadways, roof, glass all in place

A lot can happen in a year. In the past 12 months, what was only seen in renderings and drawings of the new terminal at Pittsburgh International Airport has taken shape and come to life right on the Terminal Modernization Program (TMP) construction site.

The steel frame was completed, along with the unslating roof designed to emulate the rolling hills of the region. We held a topping out ceremony with workers signing a beam and becoming part of the building's history. Glass curtain walls are now complete, enveloping the new terminal and allowing for amazing views of the airport.

Inside the terminal, tree-shaped columns were raised to not only support the building structurally, but also provide a calming feeling for passengers and guests, they evoke the forestry in the surrounding area. Construction in the new terminal is now focused inside as skilled workers in the electrical, mechanical and plumbing trades install the veins of the building.



Our **Retail Sector** experience includes convenience stores, big box stores, international grocery chains, restaurants and fast-food establishments, car dealerships, branch banks, and large-scale strip malls and mixed-use retail developments. In just the past year, we were awarded over 50 projects for Sheetz, as well as multiple car dealerships, car rental facilities, and projects for Jersey Mike's, BFS Stores and Rutters.

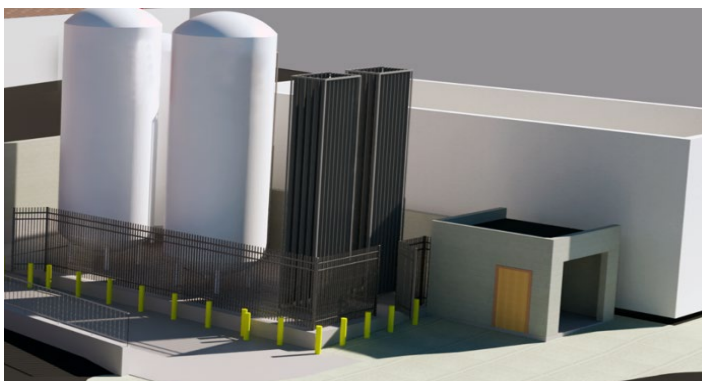


### Structural Engineering

We provide a full range of structural engineering services for new building construction, renovations, fit-outs and additions, as well equipment foundations and large bulk gas installations throughout the U.S., but what really sets our team apart is the talent and willingness to go above and beyond. Our structural engineering team has worked closely with industrial clients to create customized, proprietary parts needed for intensive industrial processes. They have completed projects ranging from the award winning and unique exterior remediation project for a 55-story high-rise in downtown Pittsburgh, which included a complex hose management system to support 6,000 linear feet of hoses and other paint removal equipment and extensive steel bracing for staging, to elevator repairs 750 ft below grade at Carlsbad Caverns, to customized moveable platforms to protect critical equipment from flooding at the Statue of Liberty.



They are currently working closing with a Pennsylvania manufacturing firm to develop multiple concepts for customized structured fiber beam pedestrian and small vehicle bridges. This desire for innovation and strong customer service to our client base has led to over 90% of their work coming from repeat clients, such as North American Hogans, Kennametal, Inc., Somerset Steel Erection Company, Inc., BNY Mellon, City of Pittsburgh, and Messer US.



A few additional highlights include:

- 2023 year over year revenue increased approximately 11%
- 21 of our employees celebrated milestone anniversaries last year, including 11 that had over 20 years of service!
- The average years of service in our firm is 15 years
- In the past 5 years, there have been 45 promotions in our firm
- In the past 5 years, 15 of our employees have obtained professional certifications or licenses
- Each of our offices (Johnstown, PA; Pittsburgh, PA; Lancaster, PA; Conneaut, OH; and Middletown, CT) have continued to grow and expand their service areas
- Our Annual Charity Golf Outing has raised over \$311,225 and has benefited 17 local charities thus far. In 2023, the event raised \$22,325 for Beginnings, Inc.
- We established two \$50,000 company-endowed scholarships, one for Pitt Johnstown's Mechanical, Electrical or Civil Engineering students and one for Penn State's Architectural Engineering students. Both were implemented in 2023.
- Our employees came together to donate to multiple causes including our food drives to benefit two food pantries in Cambria and Somerset County, PA and one to benefit a food pantry in Pittsburgh, PA, the Salvation Army's Angel Tree Program, Taunia Oechslin Girls Night Out (Joyce Murtha Breast Care Center) and Windber Health Care Foundation's Color Me Pink Walk Color. Our Conneaut (Ohio) office also donates monthly to the Lake City/Girard Food Bank



Our success is due to the talent and dedication of our employees, the diversity of our market sectors, and the long-term relationships we have maintained with clients and industry partners, and we would like to thank each of them. We are looking forward to 2024 with optimism and excitement!